

COMPANY
Profile



SKYLARK
KNIT COMPOSITE LTD.
(KNIT, WOVEN & JACKET)

www.skylark-bd.com

Key Products



We are proud member of

Table of Contents



- CORPORATE VIEWPOINT-1
- MISSION-2
- VISION OF THE ORGANIZATION-2
- OBJECTIVE-2
- QUALITY POLICY-3
- RAW MATERIAL-3
- LAB TESTING-3
- PERFORMANCE ASSURANCE-3
- COMPANY AT A GLANCE-4
- MANAGEMENT-5
- MAIN BUYER'S-5
- READY-MADE GARMENTS - 6
- HELPING UNITS - 6
- PRODUCTION FLOW CHART FOR JACKET -6
- MACHINERY LIST FOR KNIT COMPOSITE - 7
- MACHINERY LIST FOR JACKET - 8
- KNITTED PLAIN FABRIC (SINGLE/DOUBLE JERSEY - 9
- USED FABRICS - 9
- MACHINERY LIST FOR KNITTING - 10
- KNITTING DIVISION - 11
- FACTORY ORGANOGRAM - 12
- COMPLIANCE MANAGEMENT SYSTEM - 13
- COMPLIANCE OBJECTIVES - 13
- EMPLOYMENT POLICY - 13
- WORKPLACE ENVIRONMENT OF FACTORY - 13
- HEALTH - 14
- ELECTRICITY FACILITY - 14
- FIRE SAFETY - 14
- SAFETY - 15
- SECURITY - 15
- WORKERS WELFARE - 15
- ENVIRONMENTAL PROTECTION - 15
- VENTILATION, DRESS, PRAYER ROOM, DYNING - 16
- DOCTOR'S FACILITY AND FOOD - 16
- BATHROOM (TOILET) FACILITY - 16
- NO CHILD LABOUR, TOILET FACILITY - 16

We are proud member of

CORPORATE VIEWPOINT :

Bangladesh is one of the largest knit and ready-made garment exporters where skylark knit Composite Ltd. (Knitting unit & Knit Composite Unit) is playing a vital role. It started its journey as ready-made garments exporter from February'2009

Our mother factory is located on Thirteen acres of own land in Mawna Union Under Sreepur Thana under Gazipur District and another factory is located on two acres of own land in Sreepur Union Under, Sreepur Thana Under Gazipur, Dhaka District.

Skylark Knit Composite Ltd. (Knitting Unit & Knit Composite Unit) is now well equipped with modern machineries in all departments to ensure best support to suit the taste of the customers.

Skylark Knit Composite Ltd. (Knitting Unit & Knit Composite Unit) has expanded its capacity, developed a skilled workforce and introduced integrated technologies, to remain globally up-to-date.

Skylark Knit Composite Ltd. (Knitting unit & Knit Composite Unit) believes in the strategy that development is a never-ending process. Therefore it Thanks special care to improve every step & appreciated all innovative ideas for customers & employees welfare.

Skylark Knit Composite Ltd. (Knitting Unit & Knit Compos Unit) fosters with the customers & considers them as business partners. Skylark Knit Composite Ltd. is a compliant company and strives hard to uphold its Commitments to consumers.



We are proud member of



MISSION :

Skylark Knit Composite Ltd. (Knitting Unit & Knit Composite Unit) is committed to maintain Discipline, Punctuality and Quality products at reasonable price and ensure quality service. Their focus is on the customer needs and satisfaction. They always maintain delivery schedule according to buyer's requirement.

VISION OF THE ORGANIZATION:

To obtain a leading position in the Buying House sectors of Bangladesh as well as international through maintaining standard quality.

- In time action
- Clear understanding of customer's instructions.
- Clear communication with vendors
- Clear instructions for production
- Strict compliance with quality control system.
- First class quality standard.
- In time shipments

OBJECTIVES :

Skylark Knit Composite Ltd. (Knitting Unit & Knit Composite Unit) has some specific objectives such as:

- To promote the use of scientific knowledge in both unit of quality and perfection.
- To Satisfy and meet customer's expectation by developing and providing products and service on time, which offer value in terms of Quality , Price, Safety & Environmental impact.
- To promote the development and best use of human talent & equal opportunity employment.
- To attain highest level of competence through continuous development of the professional management system and to ensure complete transparency in all aspects of business.

We are proud member of



QUALITY POLICY :

The aim of skylark Knit Composite Ltd. is to become one of the leading company in the Knitting & Knit Composite sector of Bangladesh. Focuses on continuous improvement in all quality related activities and seek to prevent errors and eliminate the root causes of problems. Educate, train and quality our employees so that they can perform their tasks in accordance with the established quality standards and contribute to improvement effort. Select the suppliers on their performances. To implement the buyers requirement throughout the company.

RAW MATERIAL :

Raw material is the most important element in the creation of a best product. We always deals with almost all types of yarn starting from natural fibers. Based on deliveries & quality preferences, we source yarn from Bangladesh, China, Korea, Italy and Taiwan.

LAB TESTING :

All garments can be tested for color fastness; pilling, fiber composition etc from nominated by Buyer if required.

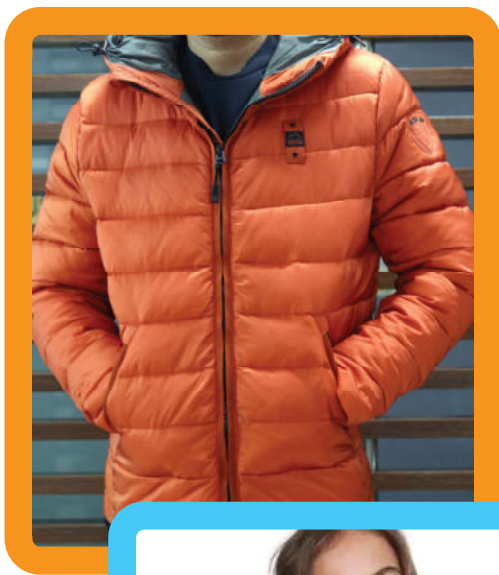
PERFORMANCE ASSURANCE :

To ensure quality of our finished goods as per Buyer's requirements, 3rd party inspection by reputed inspection team i.e Asia Inspection, Asia Quality Focus Foyal, Asia Quality Focus and Foreign representative selected by buyer are done and already passed by them.

We are proud member of

COMPANY AT A GLANCE:

Company Name	: Skylark Knit Composite Ltd.
Type of Business	: Manufacturer and Exporter
Legal Status	: Private Limited Company
Year of Establishment	: February' 2009
Contact Person	: Mohammad Iftakharul Kamal (Ifti) Chairman Mobile + 880 1713481993 email: ifti@skylark-bd.com
Head Office	: Osman Center (3rd & 4th Floor) House -34, Sonargaon Janapath Road Sector-12, Uttara, Dhaka-1230, Bangladesh.
Goole Map Location	: https://goo.gl/maps/MkktDgv5g5G2
Phone	: +880-2-55085220 +880-2-55086882 +880-2-55086883
Email	: ifti@skylark-bd.com faysol@skylark-bd.com
Webpage	: www.skylark-bd.com
Factory Address (Unit-1):	: Purbo Gazipur, Mawna Union, Sreepur 1740, Gazipur.
Total Land Area	: 13 Acres
Google Map Location	: https://goo.gl/maps/cDx3tP3sdYP2
Factory Address (Unit-2):	: Holding No : 271, Block # D, Word # 6 Uzilab, Sreepur, Gazipur, Dhaka, Bangladesh.
Total Land Area	: 2 Acres
Goole Map Location	: https://maps.app.goo.gl/iQfcrYJkg3Aktjuw9
Bank	: (1) The Premier Bank Ltd. Motijheel Branch A/C No. 108-111-000-17081 Swift: PRMRBDDHMTJ (2) Standard Bank Ltd. Panthapath Branch A/C no. 01733100997 Swift: SDBLBDDH118
Sample Capacity	: 350 pcs/day
Production Capacity	: Knitting 360 ton per month Knit Composite 9,00,000 pcs per month
Total Manpower	: Knitting 160 Persons Knit composite 1470 persons
Turnover	: US\$20.00 million



We are proud member of



Mohammad Iftakharul Kamal (Ifti)

Chairman



Faysol Ahmed Kamal

Managing Director



Luthful Bari Chowdhury

Director



Md. Rafiqul Islam

Director

CONTACT DETAILS

Chairman : Mohammad Iftakharul Kamal (Ifti)
Mobile: +880-1713481993
Email: ifti@skylark-bd.com

MAIN BUYER'S :

SL NO.	Buyer Name	Country
1.	PRICE SHOES	MEXICO
2.	CLEY	CANADA
3.	TOP SECRET	POLAND
4.	AWG	GERMANY
5.	NEW WAVE	SWEDEN
6.	BOOTLEGGERS	CANADA
7.	SPORTS GROUP	DENMARK
8.	MACDAB	NEW ZEALAND
9.	KLINGEL	GARMANY
10.	SUMITEX	JAPAN
11.	OHTANI	JAPAN
12.	PIAZAITALIA	ITALY

We are proud member of



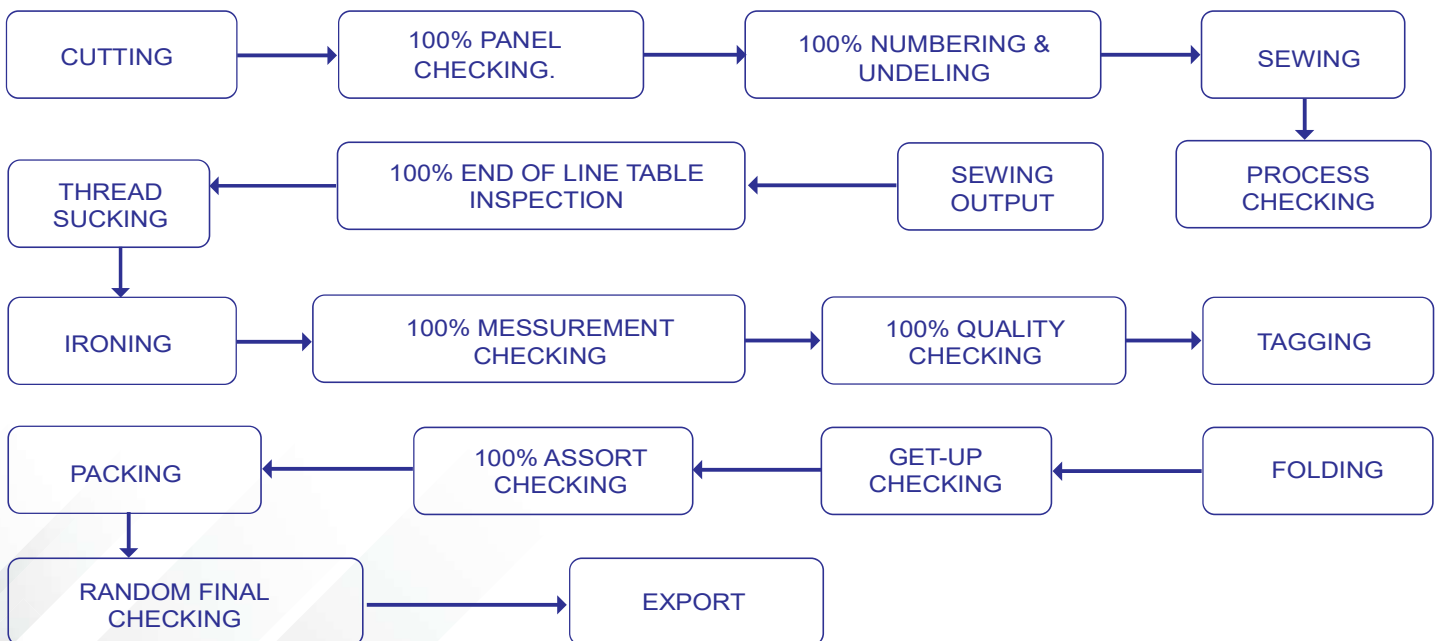
Ready-made Garments :

- Polo Shirt (Basic/Fancy)
- T-Shirt (Basic/Fancy)
- Sweat Shirt & Sweat Pant
- Ladies Wear
- Children Item
- Sports Wear
- Vest
- Tank Top
- Trousers
- Jogging Soits
- Jackets
- Night Wears
- etc

HELPING UNITS :

- WENZHOU DREAMGO APPAREL CO.,LTD
- JIAXING LAYO IMPORT AND EXPORT GROUP
- JIANGXI SINOTEX CO., LTD.
- SUZHOU GAUYUAN TEXTILE TECHNOLOGY CO.,LTD
- SUNTEX INDUSTRIES CO.LTD
- SUZHOU WEEBITEX CO.,LTD
- JIAXING XINGTUO IMP&EXP CO., LTD
- LSI INDUSTRIES LTD.
- YESTER ACCESSORIES COMPANY (BD) LTD
- TONEME LON NON-WOVEN TECH.BD LTD
- NRG COMPOSITE YARN DYEING
- DIVINE TEXTILE LTD.
- DAFFODILS INTERNATIONAL
- SAWFTEX LTD.
- HYPOID COMPOSITE KNIT LTD.
- ANLIMA YARN DYEING LTD.
- DAFFODILS GROUP
- PHP SPINNING MILLS LTD.
- DELTA SPINNING MILLS LTD.
- URMEE KNITWEAR LIMITED
- DALAS FASHION LTD.
- SHADHIN DYEING (PVT.) LIMITED
- S.N.S KNITWEAR

PRODUCTION FLOW CHART FOR KNIT COMPOSITE :



We are proud member of

MACHINERY LIST FOR KNIT COMPOSITE

Sewing Floor:

SL	Name of the machine	Brand	Qty.
01	Plain Machine (Auto/Manual)	Juki/Sun Star	305 sets
02	Over Lock Machine (4 thread 5 thread)	Juki/Shiruba/Yamata	175 sets
03	Flat Lock Machine	Juki/Shiruba/Yamata	155 sets
04	Chain Stich Machine	Juki/Shiruba	12 sets
05	Fit of the arm	Juki/Shiruba	15 sets
06	Back Tap Machine	Kansai/Shiruba	15 sets
07	Bur Tak Machine	Juki	12 sets
08	I let hole Machine	Juki	07 sets
09	Rib Cutter Machine	Dino/Yamata	05 sets
10	Button Hole Machine	Juki/Brother	15 sets
11	Button stich Machine	Juki/Brother	15 sets
12	P.M.D Machine	Kansai	07 sets
13	Snap Button Machine	Juki / Sun Star	15 sets
	Total		756 sets

General Machine:

14	Re-conning machine	UZU	05 sets
15	Fabric Checking Machine	Local Brand	02 sets
16	Shade Box	UK Made	02 sets
17	Washing Machine	LG	04 sets
	Total		13 sets

Finishing Section

18	Gas Boiler	New Bright Boiler	02 sets
19	Electric Boiler	New Bright Boiler	02 sets
20	Steam Iron	Silver Star	60 sets
21	Vacuum Table/Iron Table	New Bright Boiler	60 sets
22	Thread Sucker Machine	Local Made	03 sets
23	Heat Transfer Machine	Omron (Made in china)	05 sets
	Total		132 sets

Cutting Section

24	Cutting Machine (8"+10")	Km brand, Japan	16 sets
	Total		16 sets

Cutting Table Details

25	L 30 X ft. W 8ft. X h 3ft	Local made	05 sets
26	L 30 X ft. W 3ft. X h 3ft	Local made	05 sets
27	L 30 X ft. W 4ft. X h 3ft	Local made	07 sets
28	L 45 X ft. W 5ft. X h 3ft	Local made	05 sets
	Total		22 sets

We are proud member of

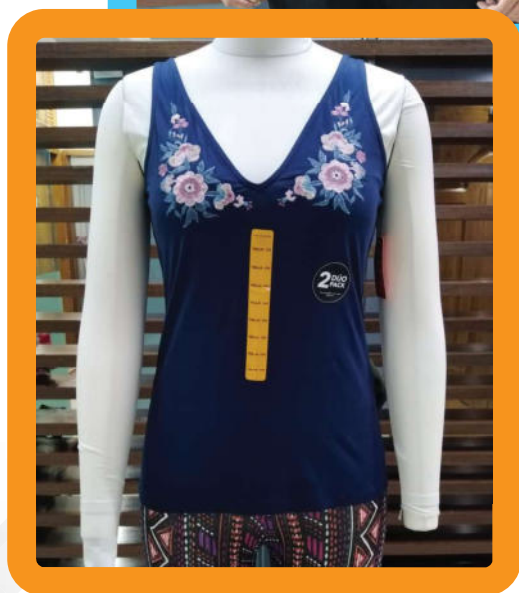
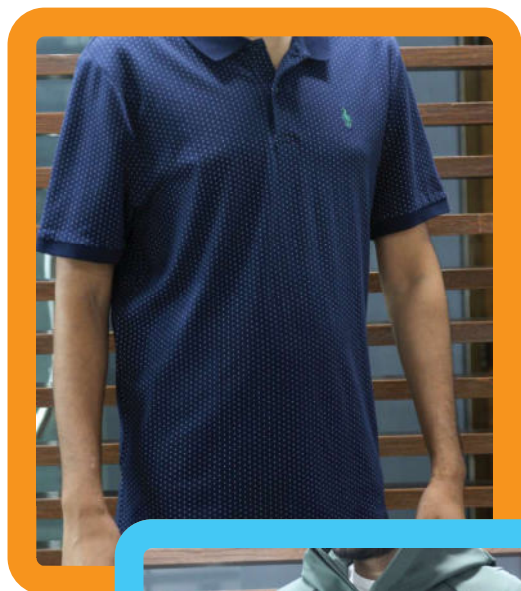
MACHINERY LIST FOR JACKET

General Machine:

SL	Name of the machine	Brand	Qty.
29	Auto Down Filling Machine	CIXING	01 Set
30	Auto Template Cutting Machine	CIXING	01 Set
31	Auto Quilting Machine	CIXING	03 Set
32	Long Arm Machine (for small part sewing)	CIXING	04 Set
33	Sleevs Join Machine	CIXING	02 Set
34	Cuff Join Machine	CIXING	02 Set
35	Cuff and Sleeve Hem Machine	CIXING	02 Set
36	Jipper Join Machine (Update Version)	CIXING	04 Set



We are proud member of



Knitted Plain Fabric (Single/Double Jersey)

We have emerged as a well renowned manufacturer and supplier of best quality Knitted Plain Fabric that come in stunning colours and prints. Our range includes Single Jersey, Modal Fabric, Cotton Lycra and many others. Made from superior grade raw materials, these fabrics are soft and easy to wash. Accentuating a soft charm to the look of every age, knitted fabrics evolved in our firm is one of the most preferred ones in market and can be sourced from us at industry leading prices.

Used Fabrics :

- Single Jersey (S/J)
- S/J with Lycra Alternate/Full Feeder
- Cotton Slub Jersey
- Cotton Slub PQ
- Heavy Jersey
- Automan Jersey
- Honeycomb Pique
- Lycra Pique
- Diamond Pique
- Single Lacoste
- Double Lacoste
- 01 X 1 RIB
- 02 X 2 RIB
- 01X1 RIB with Lycra
- 2 X 2 RIB with Lycra
- Flat Back RIB
- Irregular RIB
- Interlock
- Interlock Double Lacoste
- Fleece
- France Terry
- Herringbone
- Thermal/ Or Waffle
- Yarn Dyed

We are proud member of

MACHINERY LIST FOR KNITTING

AUTO STRIPE MACHINE									
Sl. No.	Machine Brand	Country Origin	Machine Name	Machine	Machine	No. of	Dia. W.T	Spare	Comments
				Dianicler	Feeder	Machine	Machine	Cylinder	
1.	HANGXING	CHAINA	Engineering Stripe (S/J), 4 Colors	30x24	64	7	10	30x26=1	100% Lycra Attacment
2.	HANGXING	CHAINA	Engineering Stripe (S/J), 4 Colors	30x24	54	3			
3.	HANGXING	CHAINA	Engineering Stripe (S/J), 4 Colors	32x24	54	2	2	32x20=1	100% Lycra Attacment
4.	HANGXING	CHAINA	Engineering Stripe (S/J), 4 Colors	34x24	73	3	5	34x20=1	100% Lycra Attacment
5.	HANGXING	CHAINA	Engineering Stripe (S/J), 4 Colors	34x24	54	2			
6.	HANGXING	CHAINA	Engineering Stripe (S/J), 4 Colors	36x24	72	4	4	36x20=1	100% Lycra Attacment
7.	HANGXING	CHAINA	Engineering Stripe (Frecee), 4 Colors	30x20	64	3	3	30x20=1	100% Lycra Attacment
8.			Engineering Stripe (S/J), 4 Colors	30x20	64	2	2		100% Lycra Attacment
						Total	26	26	

CIRCULAR KNITTING MACHINE

Sl. No.	Machine Brand	Country Origin	Machine Name	Machine Dianicler	Machine Feeder	No. of Machine	Dia.W.T Machine	Spare Cylinder	Comments	
1	ORIGIO	ITALY	Single Jercy Tube Circular Knitting	28x24	84	2	6		100% Lycra Aattacment	
2	HONJU	CHAINA	Single Jercy Tube Circular Knitting	28x24	84	2				
3	RELTEX	CHAINA	Single Jercy Tube Circular Knitting	28x24	84	2				
4	RELTEX	CHAINA	Single Jercy Tube Circular Knitting	30x24	90	3	7	30X20=1	100% Lycra Aattacment	
5	HONJU	CHAINA	Single Jercy Open width Circular Knitting	30x24	90	2			30X28g	100% Lycra Aattacment
6	SUNDA	TAIWAN	Single Jercy Open width Circular Knitting	30x24	90	2	5			
7	SUNDA	CHAINA	Single Jercy Open width Circular Knitting	32x24	96	3			32x28g	100% Lycra Aattacment
8	BAIYUAN	TAIWAN	Single Jercy Tube Circular Knitting	32x24	96	2				100% Lycra Aattacment
9	RELTEX	CHAINA	Single Jercy Tube Circular Knitting	34x24	102	2	9	34X30g	100% Lycra Aattacment	
10	SUNDA	TAIWAN	Single Jercy Tube Circular Knitting	34x24	102	2				
11	RELTEX	CHAINA	Single Jercy Open width Circular Knitting	34x24	102	5				
12	SUNDA	TAIWAN	Single Jercy Open width Circular Knitting	34x24	102	4	4			
13	RELTEX	CHAINA	Single Jercy Open width Circular Knitting	36x24	108	6	12	36x20g	100% Lycra Aattacment	
14	BAIYUAN	CHAINA	Single Jercy Open width Circular Knitting	36x24	108	4				
15	SUNDA	TAIWAN	Single Jercy Tube Circular Knitting	36X24	108	2				
16	RELTEX	CHAINA	Single Jercy Open width Circular Knitting	36X24	114	2	4		100% Lycra Aattacment	
17	RELTEX	CHAINA	Single Jercy Tube Circular Knitting	36X24	228	2				
18	RELTEX	CHAINA	Single Jercy Open width Circular Knitting	40X24	120	2	2		100% Lycra Aattacment	
19			Single Jercy Open width Circular Knitting	40X24	120	2	2		100% Lycra Aattacment	
20	SUNDA	TAIWAN	Rib Circular Knitting	34X18	72	2	2	34X24=1	100% Lycra Aattacment	
21	SMART	TAIWAN	Rib Circular Knitting	36X18	72	2	2	36X24=1	100% Lycra Aattacment	
22	SUNDA	TAIWAN	Rib Circular Knitting	38X18	72	2	2	38X24=1	100% Lycra Aattacment	
23	RELTEX	CHAINA	Rib Circular Knitting	42X18	84	2	2			
24			Rib Circular Knitting	42X18	84	2	2			
25			Three Thread Flecce circular Knitting	30X20	60	2	2		100% Lycra Aattacment	
26			Three Thread Flecce circular Knitting	32X20	60	2	2		100% Lycra Aattacment	
27			Three Thread Flecce circular Knitting	34X24	68	2	2		100% Lycra Aattacment	
						Total	67	67		

Machine List

1		Automatic Draw String Machine	0.2-0.8 mm	2	2		
2		automatic Tube Cord Machine	1-2 cm	2	2		
3		Automatic Cord Machine	1-2 cm	2	2		
				Total	6	6	

We are proud member of

KNITTING DIVISION

Engineering Stripe Circular Knitting Machine

Type of Machine	DIA & GG	Qty in Pcs	Brand	Remerks
Fleece	30 X 20	2	Hangxing	
Total		2		
Jersey	30 X 24	5	Hangxing	
Jersey	30 X 24	1	Hangxing	
Jersey	30 X 24	3	Hangxing	
Jersey	30 X 24	3	Hangxing	
Total		12		

Normal Circular Knitting Machine

Type of Machine	DIA & GG	Qty in Pcs	Brand	Remerks
Fleece	30 X 20	2	Hongji	
Fleece	30 X 20	2	Hongji	
Fleece	30 X 20	2	Hongji	
Total		6		

Normal Circular Knitting Machine

Rib	34 X 18	1	Smart	
Rib	36 X 18	1	Smart	
Rib	42 X 18	1	Balyun	
Rib	42 X 18	1	Reltex	
Rib	42 X 18	1	Reltex	
Total		5		

Normal Circular Knitting Machine

Jersey	28 X 24	1	Reltex	
Jersey	28 X 24	1	Hongji	
Jersey	30 X 24	2	Reltex	
Jersey	30 X 24	2	Hongji	
Jersey	32 X 24	1	Reltex	
Jersey	32 X 24	1	Baiyun	
Jersey	34 X 24	2	Baiyun	
Jersey	34 X 24	1	Sunda	
Jersey	34 X 24	4	Reltex	
Jersey	36 X 24	2	Baiyun	
Jersey	36 X 24	1	Sunda	
Jersey	36 X 24	4	Reltex	
Jersey	38 X 24	2	Reltex	
Jersey	40 X 24	1	Reltex	
Total		25		
Grand Total		50		

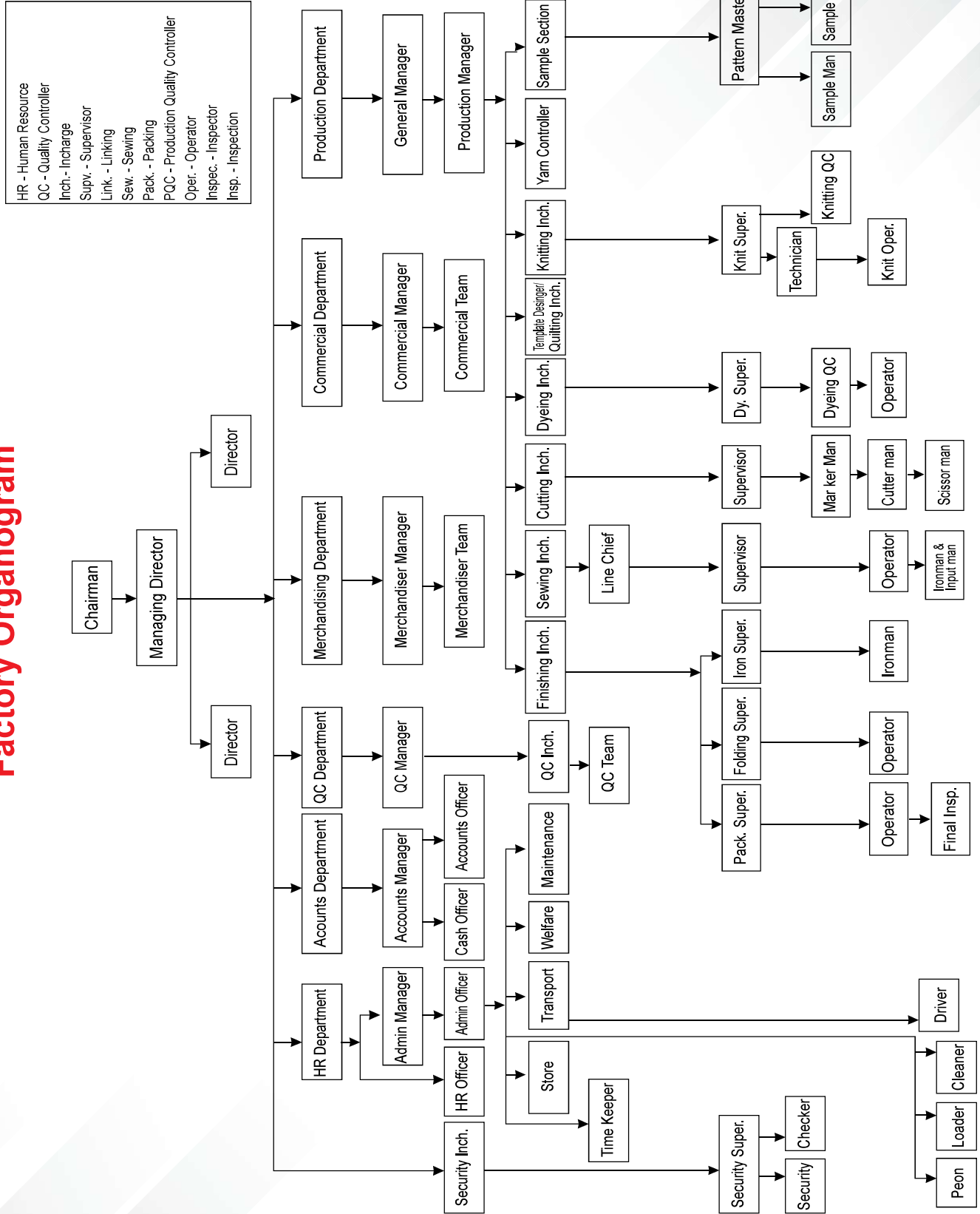
Flat Knit Jacquart Machine

Full Jacquart	50" Inch	50 Set	Cixing	
Total		50 set		

We are proud member of

Skylark Knit Composite Limited

Factory Organogram



We are proud member of



COMPLIANCE MANAGEMENT SYSTEM:

“Effective implementation and monitoring the principles of management throughout the organization with compliant of the national & international law / legislation and standard to improve relation between employees and management”

COMPLIANCE OBJECTIVES:

- Meeting compliance with the country law & customers' "Code of Conduct (CoC)"
- To compliance the social responsibility.
- Maintaining high standard of health, safety and environment.
- Knowing and meeting the applicable statutory and regulatory requirements.
- Providing necessary resources including knowledge and training to employees.

EMPLOYMENT POLICY

- Child Labour: Children are strictly prohibited to be employed.
- Equal Treatment / No Discrimination: All employees have equal access to jobs.
- Compensation: Wages paid as per legally mandated minimum rates.
- Working Hours: working hours followed with the prevailing laws.
- Leave: Employees are entitled as per legally mandated leave.
- No Harassment or Abuse: Work environment free of harassment or abuse.
- Voluntary Employment: Forced labour, involuntary prison labour is not allowed.
- All workers are oriented before going to the workstation.

WORKPLACE ENVIRONMENT OF FACTORY:

- Floors are designed and allocated as per international compliance standard.
- Equipment and machineries are allocated with compliant.
- Space for employees is maintained as per standard in the floor.
- Work stations are properly ventilated.
- Floors are maintained neat and clean.
- Separate store for yarn, fabrics and accessories.
- All goods in the stores are properly labeled. Bin cards available.

We are proud member of



HEALTH:

- Assured a safe and hygienic working environment.
- Appropriate and adequate personal safety equipment and clothing are provided.
- Employees are provided portable drinking water, hygiene toilets, & washing facilities.
- All electric appliances are maintained by qualified engineers and electricians.
- Noise and lights are maintained as per standard.
- Only trained and designated persons are handled chemicals and heavy materials.
- Available safety instructions and MSDS are provided near to the work station.
- Awareness programs are conducted with the employees periodically to aware H & S.
- Sufficient first-aid boxes are provided in the work station.
- A well equipped medical centre is provided with full time doctor and nurses.

ELECTRICITY FACILITY :

All concealed wiring in most modern systems with proper safety measure. Besides Govt. facilities of electricity the Company has own 500 KVA 1 pcs 200 KVA 2 pcs and 250 KVA 3 pcs auto Generator to keep full stream of production in all time.

FIRE SAFETY:

Sufficient Fire extinguishers, automatic fire hydrant and othe eqpt are installed. Workers are trained and wear identification badge. Aisles, exits and stairs are maintained free of obstructions and marked permanently by using color tiles. Electronic fire alarm system in placed. Smoke detector, public addressed (PA) system and Emergency lights are installed. Every floor has separate evacuation plan. All employees are insured by a group insurance policy.

We are proud member of



SAFETY:

Safety is a major concern of our Company. We do periodical checking of all electric lines and equipment to ensure safe working environment. Protective gloves and masks are given to workers who are working with risk with regard to washing chemicals and yarn fluff respectively. Our factory has fire evacuation plans in each floor and regular fire drills are carried out and timed. Required numbers of fire extinguishers are in place in the factories. Fire alarm bells are installed in different places of the building and the bells are regularly checked. It's our policy to keep Fire Exits open even when there is one member of the staff in the factory building.

SECURITY :

- Company has won trained sufficient security guards for all factories.
- A written security policy has been established as per requirement of C-TPAT.
- All premises are secured by the Close Circuit TV Camera (CCTV Camera).
- Appropriate measures takes, such as secure premises to prevent entry.
- restricted access to the production facility by non-employees, authorized ID-cards and escorting of visitors while in the facility etc.

WORKER'S WELFARE:

- Worker's welfare committee formed in the factory.
- Welfare officer communicates with the committee.
- Committee meeting held in every month.

ENVIRONMENTAL PROTECTION:

- All factories of the group are compliant with national environmental legislation.
- A written policy has been introduced to manage and dispose the wastage.

We are proud member of



VENTILATION:

Full facilities for proper ventilation and light.

DRESS:

Apron, Cap & Mask provided to every single worker for occupational health and safety measures.

BABY CARE CENTER:

Workers new born babies are take care by trained nurse while mothers are at Work.

PRAYER ROOM

Space provided to workers for prayer.

DYNING

Dyning facility is available at the factory.

DOCTOR'S FACILITY AND FOOD:

Doctor & Nurse are always available for medical treatment at factories. In addition to the above we ensure the sufficient medicines for normal treatment in the factories

NO CHILD LABOUR:

All workers are working in the factory, above the age 18 (Eighteen) as per the agreement signed between our Association and the International Labour Organization (ILO). All workers give written declarations regarding their age. This is the procedure of Labour Law. So there is no Child Labour in our both factories.

TOILET FACILITY

38 units for gents worker, 50 units for ladies worker & 08 units for staff with proper health sanitation system.

We are proud member of



Factory Unit-1

Purbo Gazipur, Mawna Union,
Sreepur 1740, Gazipur.
Google Map Location:

<https://goo.gl/maps/cDx3tP3sdYP2>



Factory Unit-2

Holding No : 271, Block # D, Word # 6
Uzilab, Sreepur, Gazipur, Dhaka, Bangladesh
Google Map Location:

<https://maps.app.goo.gl/iQfcrYJkg3Aktjuw9>



Head Office :

Osman Centre, (3rd & 4th Floor)
House-34, Sonargaon, Janapath Road
Sector-12, Uttara, Dhaka-1230, Bangladesh.
Google Map Location:

<https://goo.gl/maps/MkktDgv5g5G2>



+88 02-55085220

+88 02-55086882



info@skylark-bd.com